

DATA  
OUTPUT

## DIGITAL INSIDE POINT CALIPERS

depth stop **6143**  
(optional)

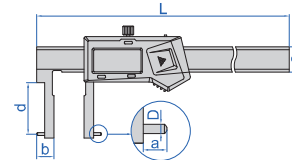
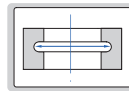


**1121-150A**  
type A



**1121-150B**  
type B

- Non waterproof
- Measure groove diameter
- Resolution: 0.01mm/0.0005"
- Buttons type A: on/off, set, mm/inch, preset (+, -)  
type B: on/off, zero, mm/inch
- Automatic power off, move the digital unit to turn on power
- Battery CR2032
- Data output
- Made of stainless steel
- Optional accessory: depth stop  
(code **6143**, for calipers with c=16mm)



Preset (no need to add the width of the jaws on the reading), with data interface

(mm)

Code	Range	Type	Accuracy	L	a	b	c	d	D	Wireless transmitter (optional)
<b>1121-150A</b>	24-150mm/0.94-6"	A	±0.04mm	250	5	12	16	28	Ø2	<b>7315-25</b> (receiver is needed)
<b>1121-1501</b>	35-150mm/1.38-6"	A	±0.05mm	250	6	17.5	16	60	Ø2	
<b>1121-200A</b>	25-200mm/0.98-8"	A	±0.04mm	310	5	12.5	16	37	Ø2	
<b>1121-2001</b>	40-200mm/1.57-8"	A	±0.05mm	310	7	20	16	70	Ø3	
<b>1121-300A</b>	30-300mm/1.18-12"	A	±0.07mm	410	5	15	16	50	Ø2	
<b>1121-3001A</b>	50-300mm/1.97-12"	A	±0.07mm	410	8	25	16	77	Ø3	<b>7315-22</b> (receiver is needed)
<b>1121-500A</b>	40-500mm/1.57-20"	A	±0.07mm	680	5	20	24	90	Ø3	
<b>1121-5001</b>	60-500mm/2.36-20"	A	±0.08mm	680	10	30	24	120	Ø3	
<b>1121-5002</b>	80-500mm/3.15-20"	A	±0.08mm	680	16	40	24	150	Ø3	

Preset (no need to add the width of the jaws on the reading), built-in wireless (receiver code 7315-2/3/6/7/8/9 is needed)

Code	Range	Type	Accuracy	L	a	b	c	d	D
<b>1121-150AWL</b>	24-150mm/0.94-6"	A	±0.04mm	250mm	5mm	12mm	16mm	28mm	Ø2mm
<b>1121-1501WL</b>	35-150mm/1.38-6"	A	±0.05mm	250mm	6mm	17.5mm	16mm	60mm	Ø2mm
<b>1121-200AWL</b>	25-200mm/0.98-8"	A	±0.04mm	310mm	5mm	12.5mm	16mm	37mm	Ø2mm
<b>1121-2001WL</b>	40-200mm/1.57-8"	A	±0.05mm	310mm	7mm	20mm	16mm	70mm	Ø3mm
<b>1121-300AWL</b>	30-300mm/1.18-12"	A	±0.07mm	410mm	5mm	15mm	16mm	50mm	Ø2mm
<b>1121-3001AWL</b>	50-300mm/1.97-12"	A	±0.07mm	410mm	8mm	25mm	16mm	77mm	Ø3mm
<b>1121-500AWL</b>	40-500mm/1.57-20"	A	±0.07mm	680mm	5mm	20mm	24mm	90mm	Ø3mm
<b>1121-5001WL</b>	60-500mm/2.36-20"	A	±0.08mm	680mm	10mm	30mm	24mm	120mm	Ø3mm
<b>1121-5002WL</b>	80-500mm/3.15-20"	A	±0.08mm	680mm	16mm	40mm	24mm	150mm	Ø3mm

No preset (need to add the width of the jaws on the reading)

Code	Range	Type	Accuracy	L	a	b	c	d	D
<b>1121-150B</b>	50-150mm/1.97-6"	B	±0.06mm	270mm	8mm	25mm	20mm	90mm	Ø3mm
<b>1121-200B</b>	60-200mm/2.36-8"	B	±0.06mm	320mm	10mm	30mm	20mm	100mm	Ø3mm
<b>1121-300B</b>	60-300mm/2.36-12"	B	±0.07mm	420mm	10mm	30mm	20mm	110mm	Ø3mm